

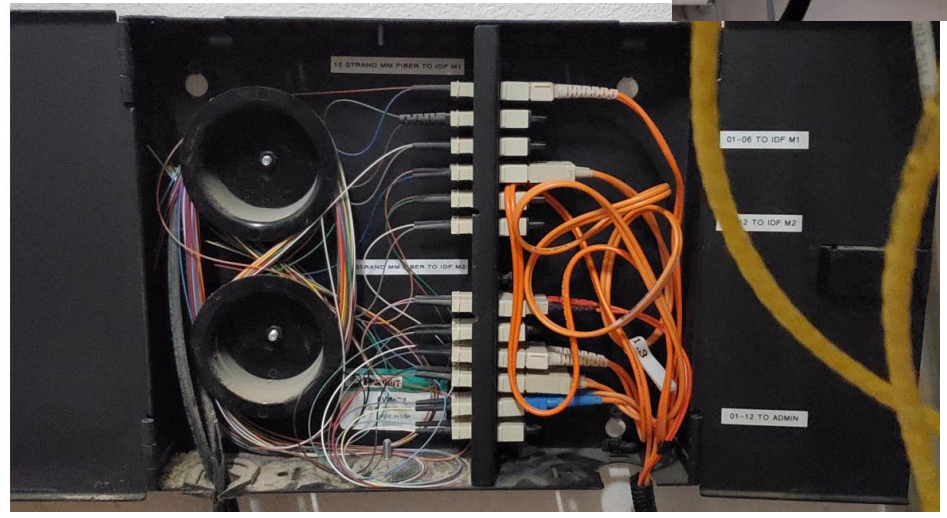
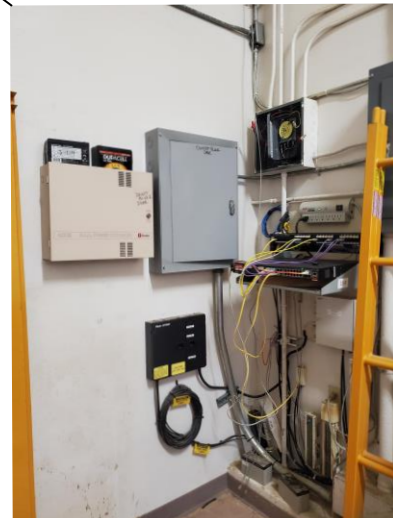
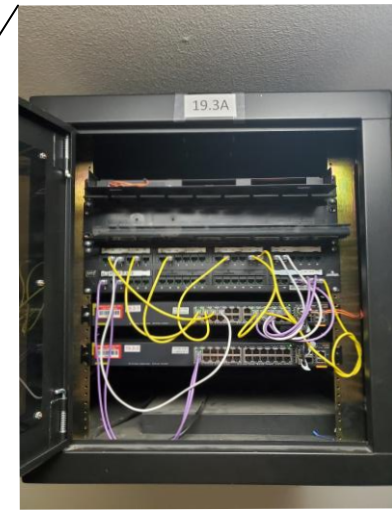
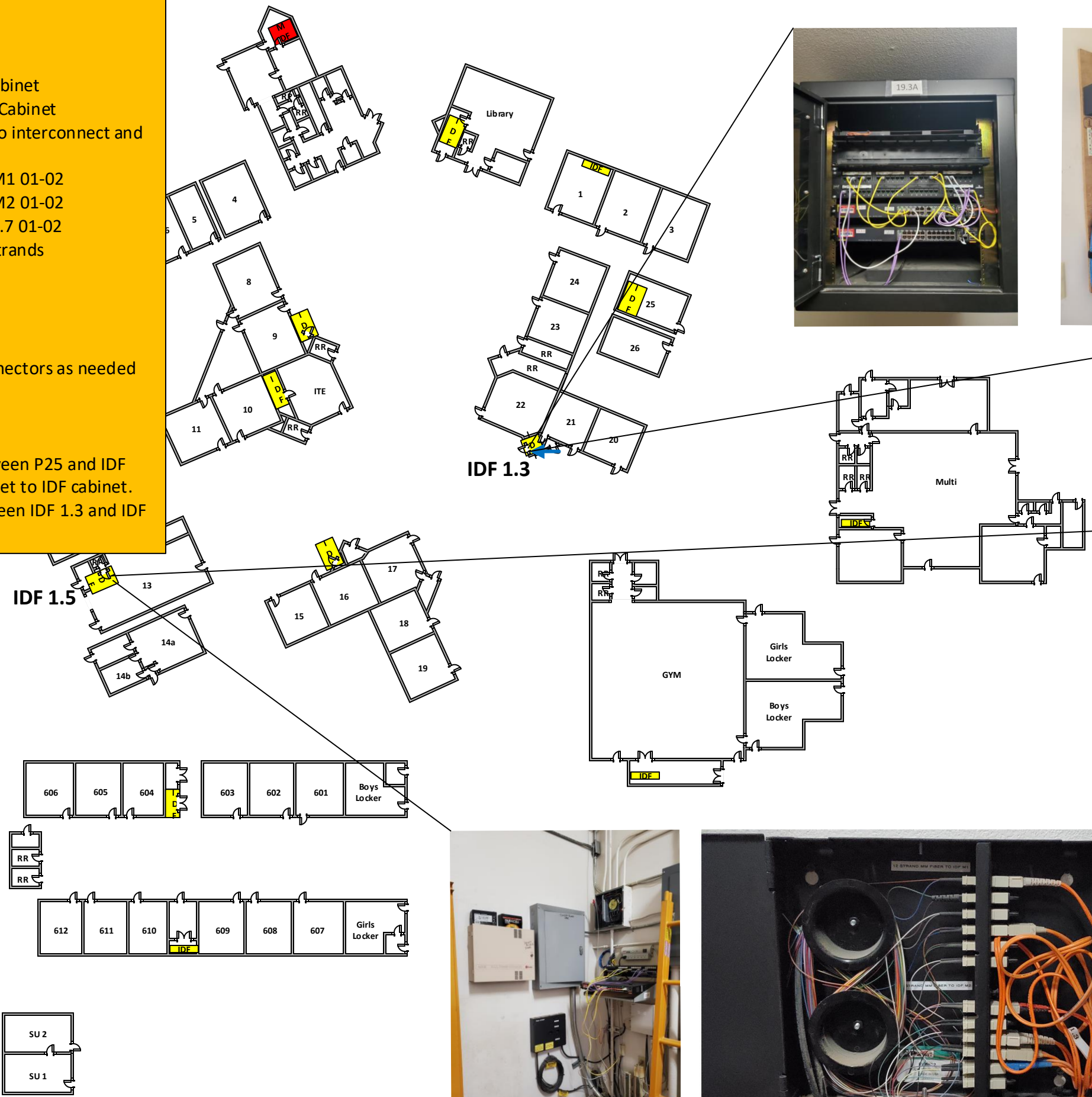
NOTES:

IDF 1.5 – Woodshop

- Install New Cabinet
- Install power into cabinet
- Move patch panel into Cabinet
- Install new Fiber LIU into Cabinet
- Fusion Splice 12 strands to interconnect and retest:
 - ADMIN 01-02 to IDF M1 01-02
 - ADMIN 03-04 to IDF M2 01-02
 - ADMIN 05-06 to IDF 1.7 01-02
- Test all remaining Fiber Strands
 - 6 Strands to Admin
 - 4 Strands to M1
 - 4 Strands to M2
 - 4 Strands to IDF 1.7
- Fusion Splice 30 new connectors as needed for repair

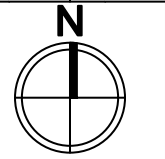
IDF 1.3

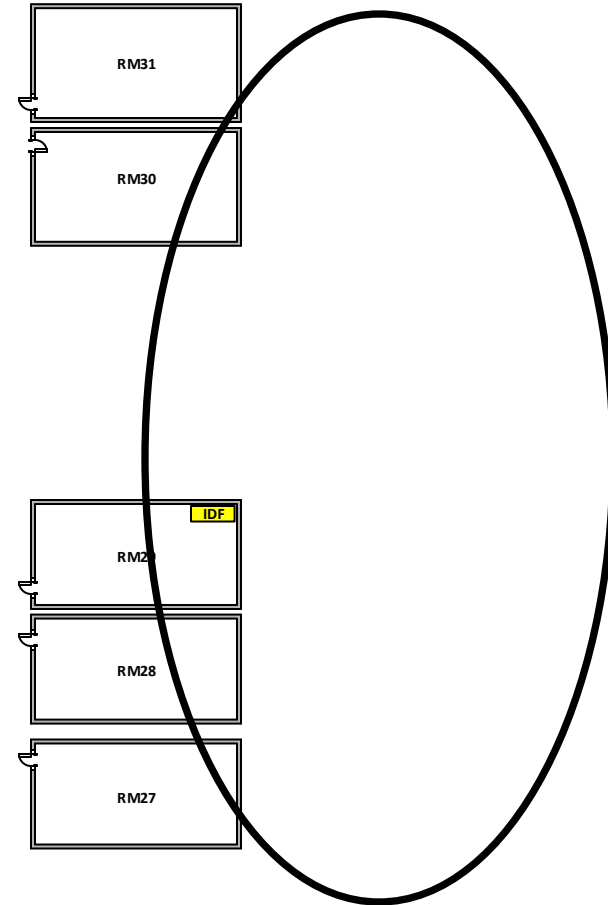
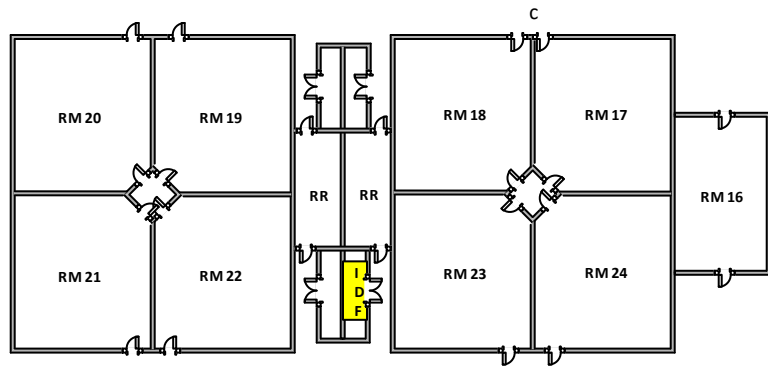
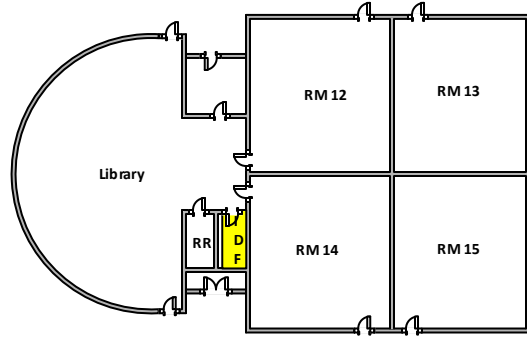
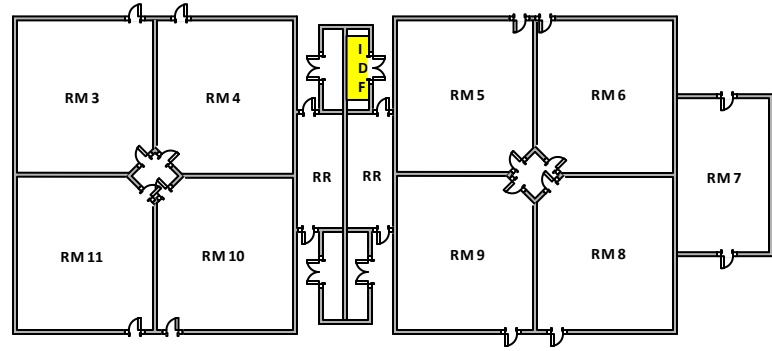
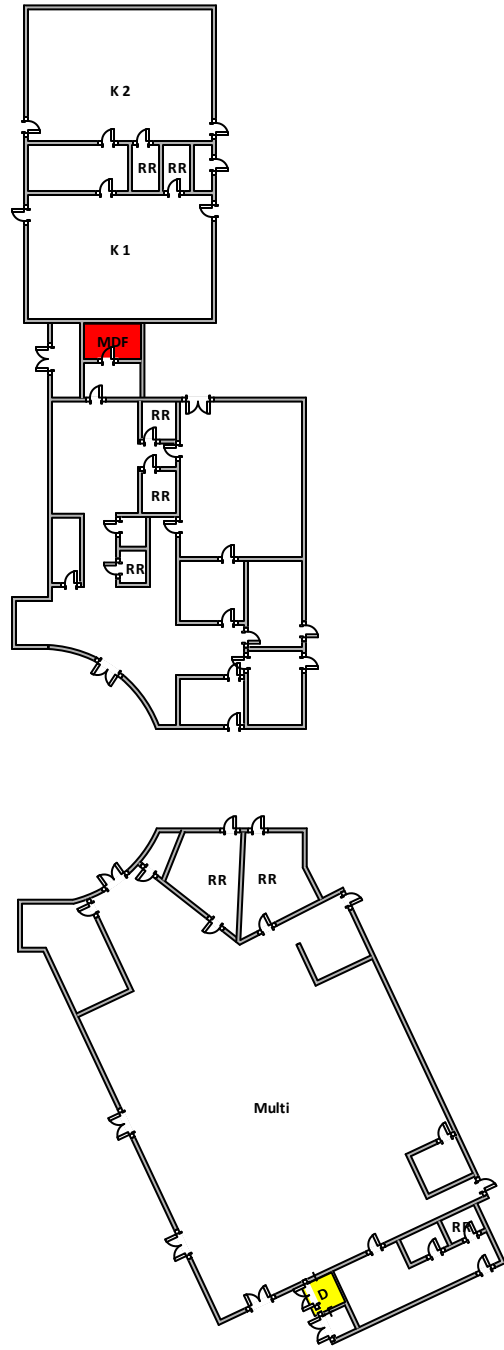
- Extend 2 OSP cables between P25 and IDF cable in intermediate closet to IDF cabinet.
- Retest 3 OSP cables between IDF 1.3 and IDF 1.3-P25



LEGEND

- DATA (Wall)
- DATA (Ceiling)
- DATA w/AP
- Outside DATA w/AP
- MDF** Main Distribution Feed
- IDF** Intermediate Distribution Feed
- MPOE** Main Point of Entry (If not in MDF)





LEGEND

- ◀ DATA (Wall)
- ▶ DATA (Ceiling)
- ▶ DATA w/AP
- ▶ Outside DATA w/AP

MDF	Main Distribution Feed
IDF	Intermediate Distribution Feed
MPOE	Main Point of Entry (If not in MDF)

Notes:

- Install 2 OSP Cables between RM 29 and RM 30
- Remove Network Cabinet in RM31



Rev # 1
PAGE 4 OF 15

FILENAME JUNCTION - JU.VSDX
Date Created / Revised 2022-11-11/



TITLE JUNCTION ELEMENTARY SCHOOL
DESCRIPTION eRate FY2022 RFP22-919

Address: 2150 Ellison Dr.
Roseville, CA 95747
916-771-1860



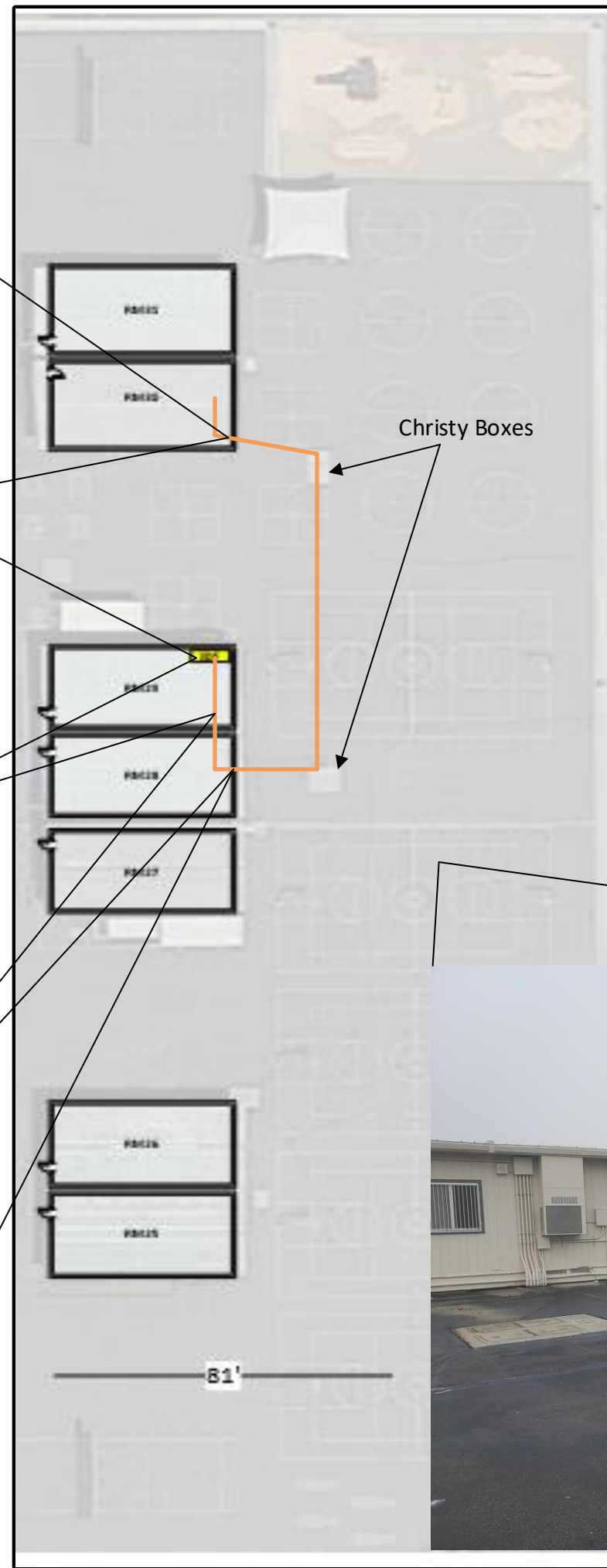
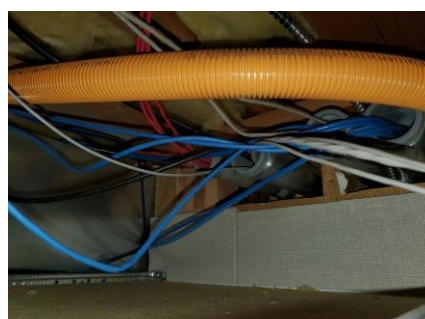
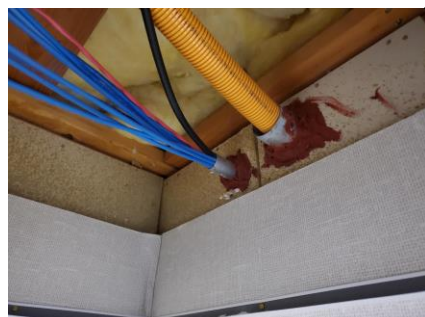
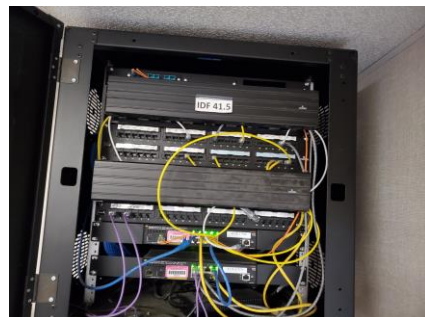
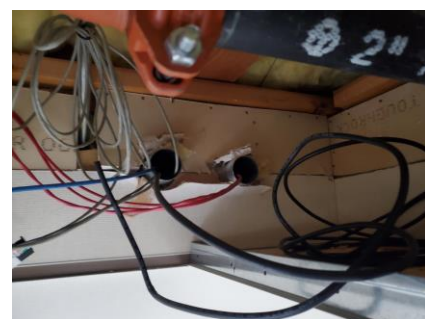
NOTES:

IDF 1.5 - Cable Pull Information

- Install 2 OSP Cable from IDF in RM29 to RM30.
- Pull through two Christy boxes
- Remove existing Ethernet cables
- Cable length is estimated at 280'

Network Cabinet Removal

- Remove existing wall cabinet in RM31
- Cabinet to re-used at Buljan Middle School



LEGEND

- DATA (Wall)
- DATA (Ceiling)
- DATA w/AP
- Outside DATA w/AP
- MDF** Main Distribution Feed
- IDF** Intermediate Distribution Feed
- MPOE** Main Point of Entry (if not in MDF)

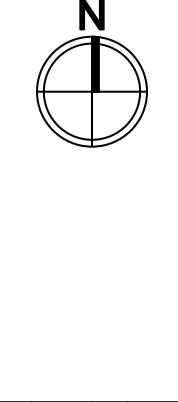
Notes:

- Install 2 OSP Cables between RM 29 and RM 30
- Remove Network Cabinet in RM31



Rev # 1
PAGE 5 OF 15

FILENAME: JUNCTION - JU.VSDX
Date Created / Revised: 2022-11-11 /



TITLE: JUNCTION ELEMENTARY SCHOOL
DESCRIPTION: eRate FY2022 RFP 22-919

Address: 2150 Ellison Dr.
Roseville, CA 95747
916-771-1860



NOTES:

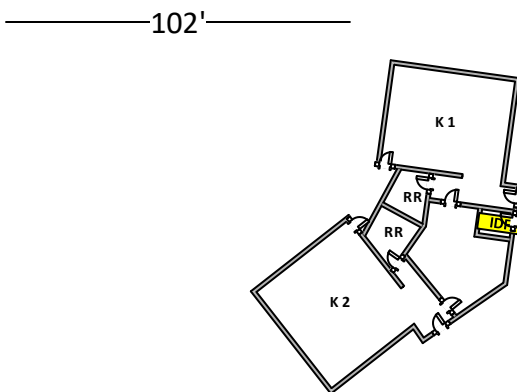
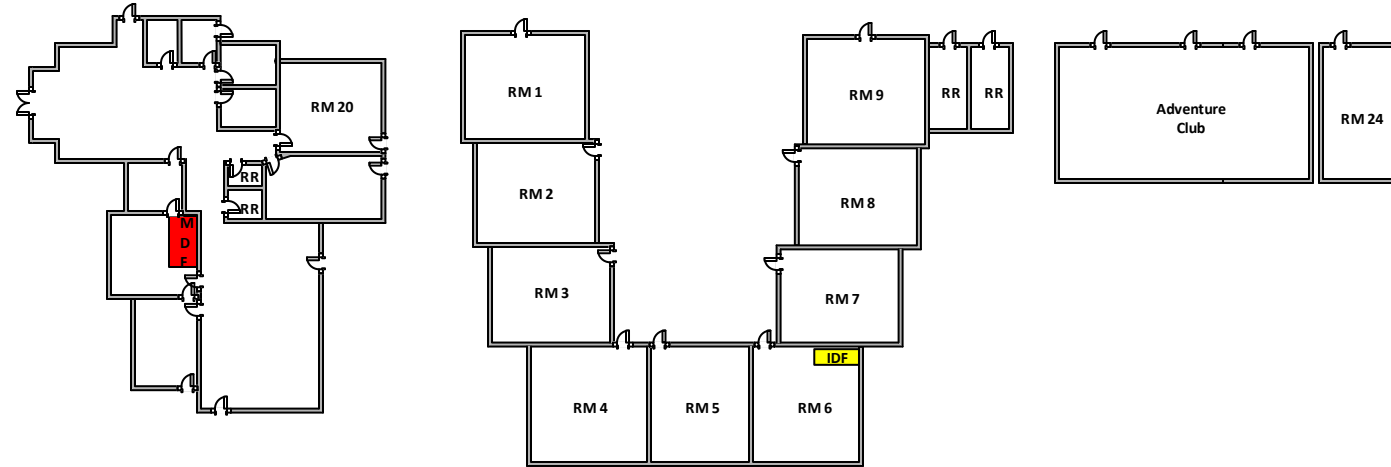
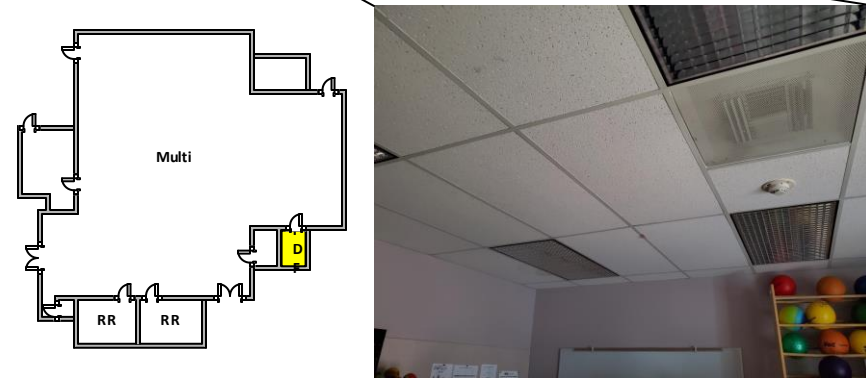
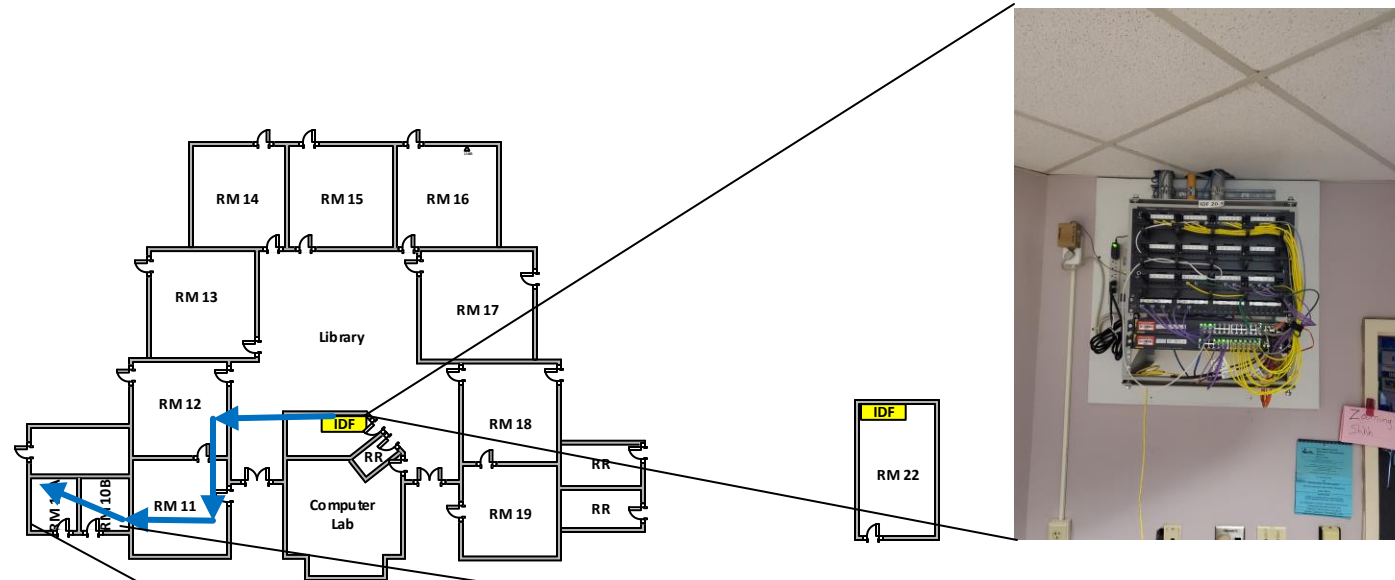
Install 6 Cables. Estimated total cable run is 785'

RM 10B Cable Installation

- ❑ Install 2 Cables for Access Point in the S/E Corner ceiling tile – 115'
- ❑ Install 1 cable in the room via raceway at 48" AFF – 120'

RM 10A Cable Installation

- ❑ Install 2 Cables for Access Point in the N/W Corner ceiling tile – 145'
- ❑ Install 1 cable in the room via raceway at 48" AFF – 145'



LEGEND

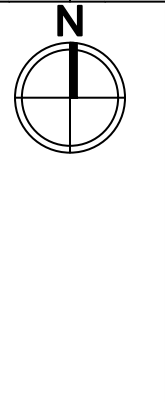
- ◀ DATA (Wall)
- ▶ DATA (Ceiling)
- ▶ DATA w/AP
- ▶ Outside DATA w/AP

MDF	Main Distribution Feed
IDF	Intermediate Distribution Feed
MPOE	Main Point of Entry (If not in MDF)



Rev # 1
PAGE 3 OF 13

FILENAME SPANGER - SP.VSDX
Date Created / Revised 2022-11-12 /



TITLE SPANGER ELEMENTARY SCHOOL
DESCRIPTION eRate FY2022 RFP22-919

Address: 699 Shasta Street
Roseville, CA 95678
916-771-1830

